



HH Harvest.co DBA
White Label

Sample 722-011724-010
C&C 1g THCA HHC Preroll RS-11 + Northern Lights

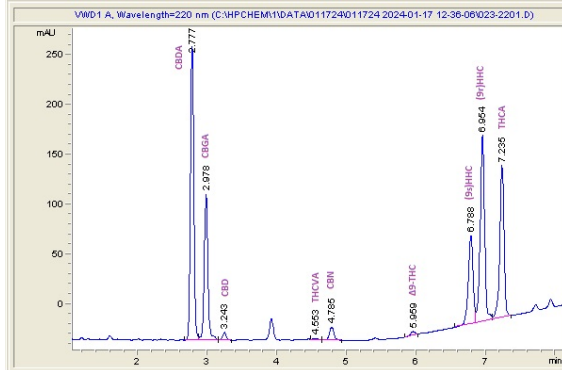
Batch/Lot # CC-PR-RSNL-1001

Sample Submitted: 01-17-2024; Report Date: 01-19-2024

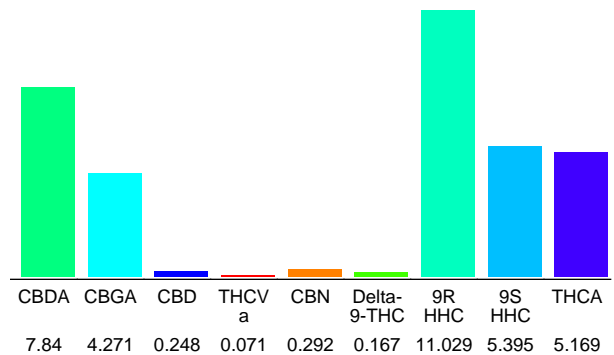
C&C 1g THCA HHC Preroll RS-11 + Northern Lights
Plant Material: Pre-roll

Batch/Lot # CC-PR-RSNL-1001

Chromatogram



Cannabinoid Profile



Cannabinoid Profile by HPLC

0.17%

Delta-9-THC

0.25%

CBD

34.48%

Total Cannabinoids

| Cannabinoid | % wt | mg/g |
|---------------------------------------------------|--------------|--------------|
| CBDA | 7.84 | 78.4 |
| CBGA | 4.271 | 42.71 |
| CBD | 0.248 | 2.48 |
| THCVa | 0.071 | 0.71 |
| CBN | 0.292 | 2.92 |
| Delta-9-THC | 0.167 | 1.67 |
| 9R HHC | 11.03 | 110.29 |
| 9S HHC | 5.395 | 53.95 |
| THCA | 5.169 | 51.69 |
| Total Cannabinoids | 34.48 | 344.8 |
| Calculated Total THC | 4.70 | 47.00 |
| Calculated CBD Yield | 7.12 | 71.24 |
| Calculated Total THC = Delta-9-THC + 0.877 * THCA | | |
| Calculated Maximum CBD Yield = CBD + 0.877 * CBDA | | |

Marin Analytics, LLC

250 Bel Marin Keys Blvd, Suite D4
Novato, CA 94949

833-321-TEST / info@marinanalytics.com

Mike Clemmons
Lab Manager

This sample has been tested by Marin Analytics, LLC using valid testing methodologies and a quality system. Values reported relate only to the sample tested. Marin Analytics, LLC makes no claims as to the efficacy, safety, or other risks associated with any detected or non-detected levels of any compounds reported herein. This Certificate shall not be reproduced except in full without the written approval of Marin Analytics, LLC. Copyright 2023 Marin Analytics, LLC All Rights Reserved.